



# GAT MONTHLY MEMBERSHIP PROGRESS REPORT

Results as of: 6/30/2023

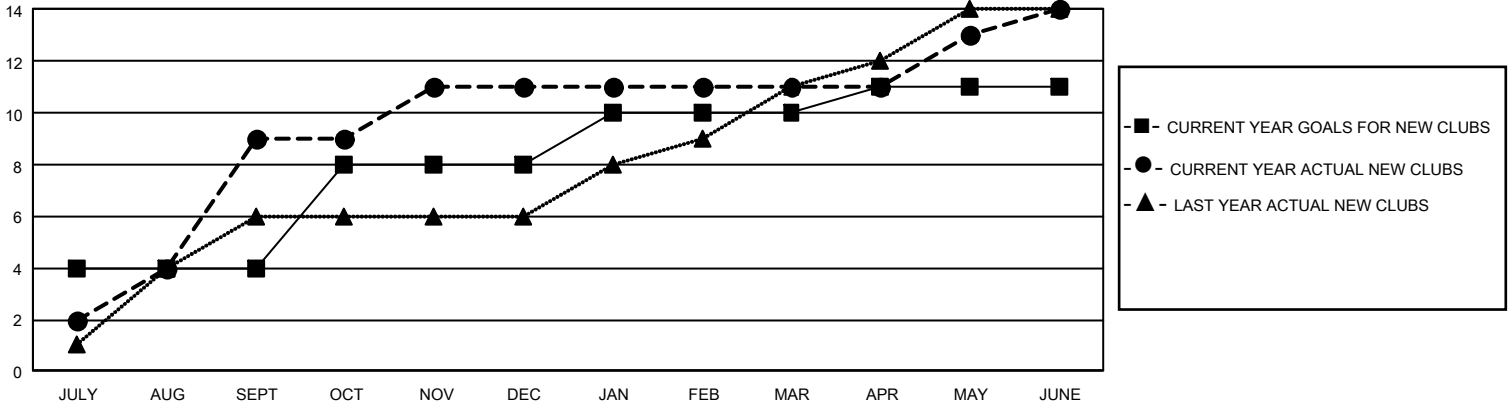
## GMT Constitutional Area 5 - E, Group P

REPORT DOES NOT INCLUDE CLUBS IN UNDISTRICTED AREAS.

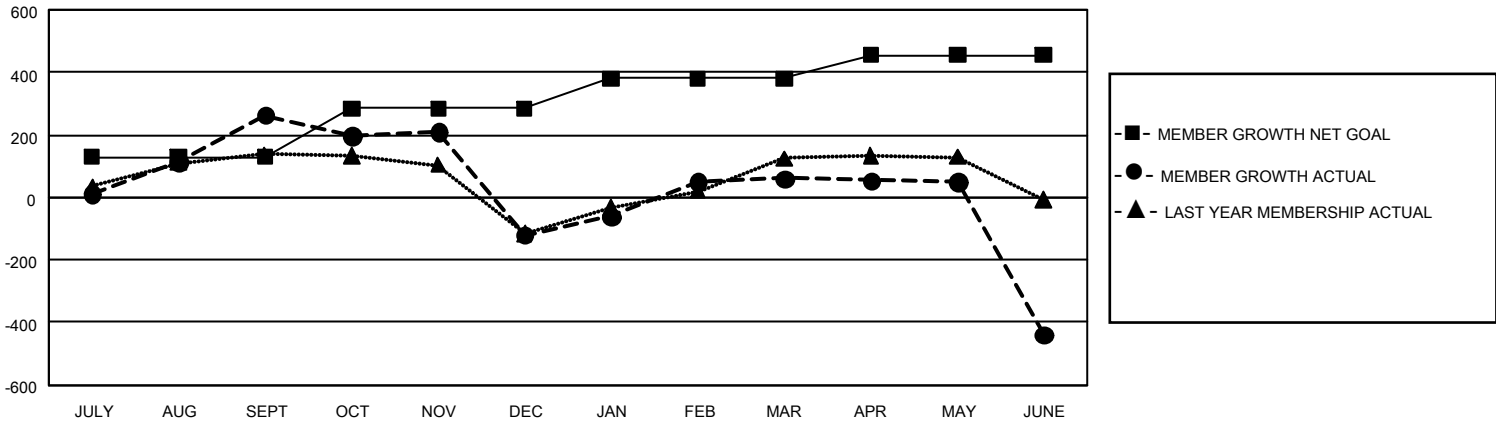
Clubs			
RESULTS FOR 2022-2023			
QUARTER	NEW CLUB GOAL	NEW CLUBS	DROPPED CLUBS
JULY/AUG/SEPT	12	9	4
OCT/NOV/DEC	12	2	2
JAN/FEB/MAR	6	0	0
APR/MAY/JUNE	3	3	8

Members			
RESULTS FOR 2022-2023			
QUARTER	MEMBER GROWTH NET GOAL	MEMBER GROWTH ACTUAL	DROPPED MEMBERS ACTUAL (including transfers)
JULY/AUG/SEPT	130	500	219
OCT/NOV/DEC	155	201	567
JAN/FEB/MAR	95	251	58
APR/MAY/JUNE	75	304	770

GOALS AND ACTUAL NEW CLUBS CUMULATIVE



GOALS AND ACTUAL MEMBERS CUMULATIVE



<b>DROPPED CLUBS: 14</b>	188 CLUBS OF 318 ADDED 1 OR MORE NEW MEMBERS	<b>GENDER DISTRIBUTION</b>	
		MALE 3,317 (48.25%) FEMALE 3,557 (51.75%) NON BINARY 0 (0.00%) PREFER NOT TO ANSWER 0 (0.00%)	
<b>DROPPED MEMBERS</b>		<a href="#">CLICK HERE FOR CUMULATIVE MEMBERSHIP DATA</a>	TOTAL FAMILY UNIT MEMBERS 527
DECEASED 51 CLUB CANCELLED 89 OTHER 1,474 <b>TOTAL 1,614</b>	FAMILY MEMBERS PAYING HALF DUES 282		